

LENA SP Audio Environment Report

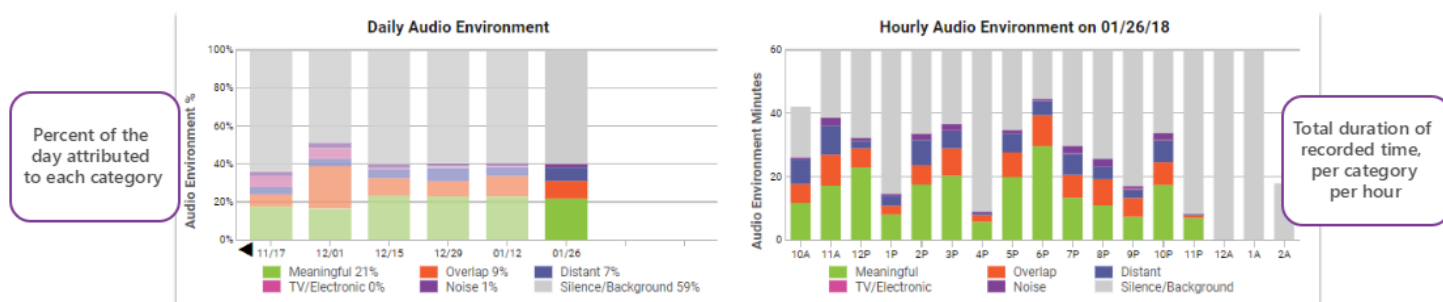
The Audio Environment section of the LENA report reveals the quantity of each of six audio data categories for the recording.

Orientation

Audio Environment displays the duration and percentage of total time for each category.

The left side shows the **Daily Audio Environment**, the overall audio composition for each LENA file. The bars and legend indicate the **percent** of the file attributed to each audio category.

The right side shows the **Hourly Audio Environment** for the selected day. Here the vertical axis represents the total number of **minutes** of recorded time in the hour. A full bar at the hourly level represents 60 minutes. Shorter bars occur when the recording was stopped or started sometime within the interval shown. In the illustration below, the recording day began around 10:18 a.m. and ran 16 hours, so the first and last bars reflect partial hours.



What are the Audio Environment categories?

Audio Environment Category	Explanation	LENA Speaker Segment IDs Included in Category
Meaningful	Any live, in-the-room human vocalizations from adult male, adult female, key child, and other child speakers. Meaningful speech includes only segments that are considered to be near and clear to the child, and it does <i>not</i> include Overlap segments.	MAN, FAN, CHN, CXN

Audio Environment Category	Explanation	LENA Speaker Segment IDs Included in Category
	In general, the hourly bar with the most green represents the region of the recording with the highest likelihood of language input and output.	
Overlap	<p>Overlap occurs whenever a human voice overlaps with something else--another human voice, sounds from a speaker, or noise.</p> <p>LENA does not apply counts for words, vocalizations, or turns to Overlap segments.</p>	OLN
Distant	Segments that don't match LENA's speaker models well due to quality or being too distant from the mic plus all lower-likelihood Overlap segments.	MAF, FAF, CHF, CXF, OLF
TV and Electronic Sounds	<p>Sounds from television, radio, or other electronic media, including music, a TV show, synthesized toy sounds, incoming communication via Skype/FaceTime, or anything else emanating from a speaker.</p> <p>The TV/ES category represents the amount of time during which TV/ electronic sounds were the <i>dominant</i> signal in the recording.</p>	TVN
Noise	Bumps, jiggles, rattles, impact sounds, friction sounds, motors, etc.--all noises that don't come from a human vocal tract or an electronic speaker.	NON
Silence & Background	Silence, faint noise, faint TV.	SIL, NOF, TVF